



essential
PARTNERS

30th Anniversary Virtual Gala
SPONSORSHIP PACKAGES
OCTOBER 1, 2020

Thirty Years of Connection, Community, and Citizenship

OUR NEW MISSION STATEMENT

Essential Partners equips people to live and work better together in community by building trust and understanding across differences.

FOR THIRTY YEARS, ESSENTIAL PARTNERS HAS HELPED PEOPLE in the most challenging situations re-discover their mutual humanity and hope for the future.

With our time-tested approach, we teach people to foster new, deeper relationships across differences. We show them how to rebuild trust where it has been broken. We help them understand each other in truer, more complex ways so they can thrive in community. We set the stage for them to find a new path forward, together. And we do this without asking anyone to compromise their values, beliefs, or identities.

Relationships, trust, and understanding—it sounds simple. But polarization is possible wherever there's a difference of values, beliefs, or identities. It isn't just a partisan problem, it's a dynamic of human relationships. It takes courage, determination, and skill to repair the fraying bonds of a community.

Essential Partners was founded as the Public Conversations Project in December 1989 by Laura R. Chasin and a close-knit team of family therapists. They recognized the rising polarization in public discourse as a danger to a pluralist, nonviolent civil society. Our founders were innovators and visionaries. They developed our trademark model, Reflective Structured Dialogue, put it into practice around the globe, and taught others how to apply it in their own communities, campuses, and congregations.

Today, we follow in their footsteps, envisioning a world of thriving communities strengthened by difference, connected by trust. We train local leaders, provide support for their bridge-building efforts, and serve as a vibrant hub of innovation and exploration.

On October 1, 2020 we will host a virtual gala to celebrate 30 years of hope, healing, and community. Join us to honor our founders, learn about our impact, and help launch Essential Partners into its next three decades.

Katie Hyten & John Sarrouf
Co-Executive Directors



Sponsorship Packages

Behind every belief is a person with a story.
Our story begins with you.

THE CHASIN LEADERSHIP CIRCLE · \$10,000+

- Private half-day consultation with senior EP facilitator
- One-day dialogue and skill-building workshop (virtual available)
- Thanked in spoken remarks by Executive Directors
- Prominent logo placement during virtual gala program
- Acknowledgement and logo in gala program and on EP website
- 30 tickets to the virtual gala event

FOUNDERS CIRCLE · \$5,000+

- Up to 3 free registrations to any EP open enrollment workshop
- Thanked in spoken remarks by Executive Directors
- Logo featured during virtual gala program
- Acknowledgement and logo in gala program and on EP website
- 20 tickets to the virtual gala event

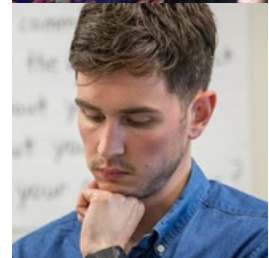
STEWARDSHIP CIRCLE · \$2,500+

- Thanked in spoken remarks by Executive Directors
- Logo featured during virtual gala program
- Acknowledgement and logo in gala program and on EP website
- 12 tickets to the virtual gala event

PARTNERSHIP CIRCLE · \$1,000+

- Logo featured during virtual gala program
- Acknowledgement and logo in gala program and on EP website
- 6 tickets to the virtual gala event

To discuss sponsorships, contact Damien Lally, Director of Development,
at damien@whatisessential.org or 617-923-1216 ext. 23



essential partners
186 Alewife Brook Pkwy, Ste. 212
Cambridge, MA 02138
617 923 1216
whatisessential.org